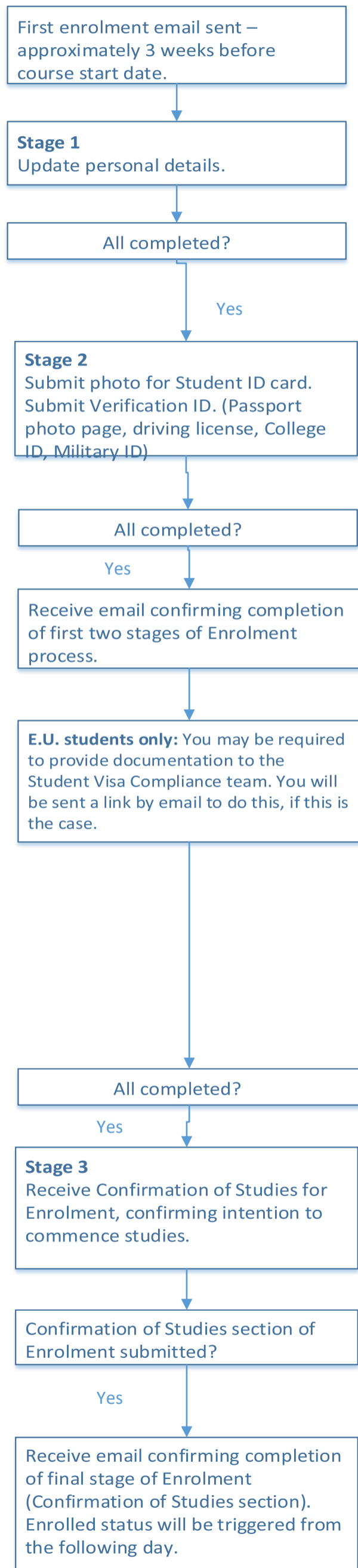


Home/ EU New NCFM Enrolment Process Flowchart



Approximately 10 days before course start date

Enrolment process will not be completed until Confirmation of Studies stage of Enrolment has been completed.

Once Enrolment has been completed. Please can you ensure that you email holbeachadmin@lincoln.ac.uk to receive confirmation of the name of your personal tutor.

Please note, at all stages of the Enrolment process, you will receive either a confirmation email, or a chaser email explaining what still needs to happen. If you have outstanding tuition fees with the University of Lincoln, you will not receive the Confirmation of Studies (Stage 3) for Enrolment until those fees have been cleared.