

Mike Healey

# DRAWING WORKS



# DRAWING WORKS

MIKE HEALEY

THE DRAWN-OUT GALLERY  
8 - 22 AUGUST 2010  
COLLEGE OF FINE ART  
UNIVERSITY OF NEW SOUTH  
WALES  
SYDNEY  
AUSTRALIA

ELKINS GALLERY  
18-26 SEPTEMBER 2010  
TYLER SCHOOL OF ART  
TEMPLE UNIVERSITY  
PHILADELPHIA  
PENNSYLVANIA  
USA

THOMPSONS GALLERY  
15 NEW CAVENDISH STREET  
MARYLEBONE  
LONDON W1G 9UB  
UNITED KINGDOM

## **Mike Healey**

### **Drawing Works**

Michael Healey is an excellent example of a Renaissance artist: that is, someone who doesn't limit himself to one medium and whose work crosses over many artistic disciplines. A very well known painter and an award winning designer, his work encompasses drawing, painting and printmaking. A recent collaborative research project even involves sculpture; working with a distinguished academic colleague in Australia, Professor Mike Esson, Healey won a prestigious UK research grant for Esson's "The Art of Reconstruction", a project that blurs the boundaries between art and medicine. The project, which is collaboration among key international players in medicine and art, aims to improve the results of plastic surgery.

His recent solo exhibition of experimental letterpress drawings at Tyler School of Art was a particularly striking example of Healey's polymorphous creativity. This suite of twelve square compositions in subtle tones and muted colors confounds the eye. The interplay of stripes and geometric shapes intersecting one another forms a jazz-like rhythm that is both understated and dazzling. A closer inspection of the drawing surfaces reveals further visual wit, as some of the shapes are cut out in several places to reveal multiple layers. Stepping back from the drawings, perspective shifts between the two- and three-dimensional elements in each piece: which of the lines are real shadows and which printed? The drawings invite the viewer to move back and forth, trying to resolve this conundrum.

Rochelle Toner, Emeritus Professor of Printmaking at Tyler School of Art, had this to say about Healey's work:

Michael Healey's show in the Stella Elkins Tyler Gallery was dazzling. The images are constructed from material earlier printed on a letterpress, deconstructed and assembled to form optically complex relationships of line, form and color. Each

piece is visually compelling while also having a strong physicality. The pieces are individually successful and riveting but as a suite of interrelated images they are dynamic. A somewhat unexpected effect is that although the work is hard edged and mechanical in its execution, there is a forceful underlying feeling of nature and germination. Indeed some of these on-going ideas follow a line of thought that can be traced back to a successful experimental show at Temple Gallery, Tokyo, Japan, March 13-17 2004. Art lovers should eagerly await Healey's next body of work as he continues his creative journey. It is sure to be both a surprise and a delight.

Professor Stephanie Knopp

Chair, Graphic Arts and Design Department  
Professor, Graphic and Interactive Design  
Tyler School of Art  
Temple University  
Philadelphia  
Pennsylvania  
USA

## **Drawing Works**

The Drawn-Out Gallery  
8 - 22 August 2010  
College of Fine Art  
University of New South Wales  
Sydney  
Australia

The International Drawing Research Institute is a consortium of art schools from throughout Europe Asia, the Middle East and Australia, to promote contemporary drawing practice and research. Regular projects, conferences, exchanges and particularly exhibitions form a significant contribution to the research activities and inspire a range of graphic responses and philosophical concerns.

The College of Fine Arts, The University of New South Wales invited Michael Healey to exhibit his series of very fine letterpress drawings at the Drawn – Out Gallery, during his short residency at COFA in 2010.

These complex and layered works retain the essential ingredients of drawing, where line and structure conjure fascinating references to the works of Charles Rennie Mackintosh, whilst establishing their own contemporary resonance. Drawing practice engages a broad range of processes allowing for a maximum visual expression.

Healey's drawings demand consideration of not only their formal qualities of structure, space and line, but the underlying philosophical framework that gives them visual authority and graphic intensity. The thematic organisational process produces dense cages of colour and light woven to imaginative effect. Essentially modernist in origin, every structure asserts its own abstract meaning through the concentrated dynamic interplay of positive and negative forms, which evoke mysterious associations. The images are sophisticated yet sensitive but do not reveal their secrets easily.

Professor Michael Esson

Director, International Drawing Research Institute  
College of Fine Art  
University of New South Wales  
Sydney  
Australia



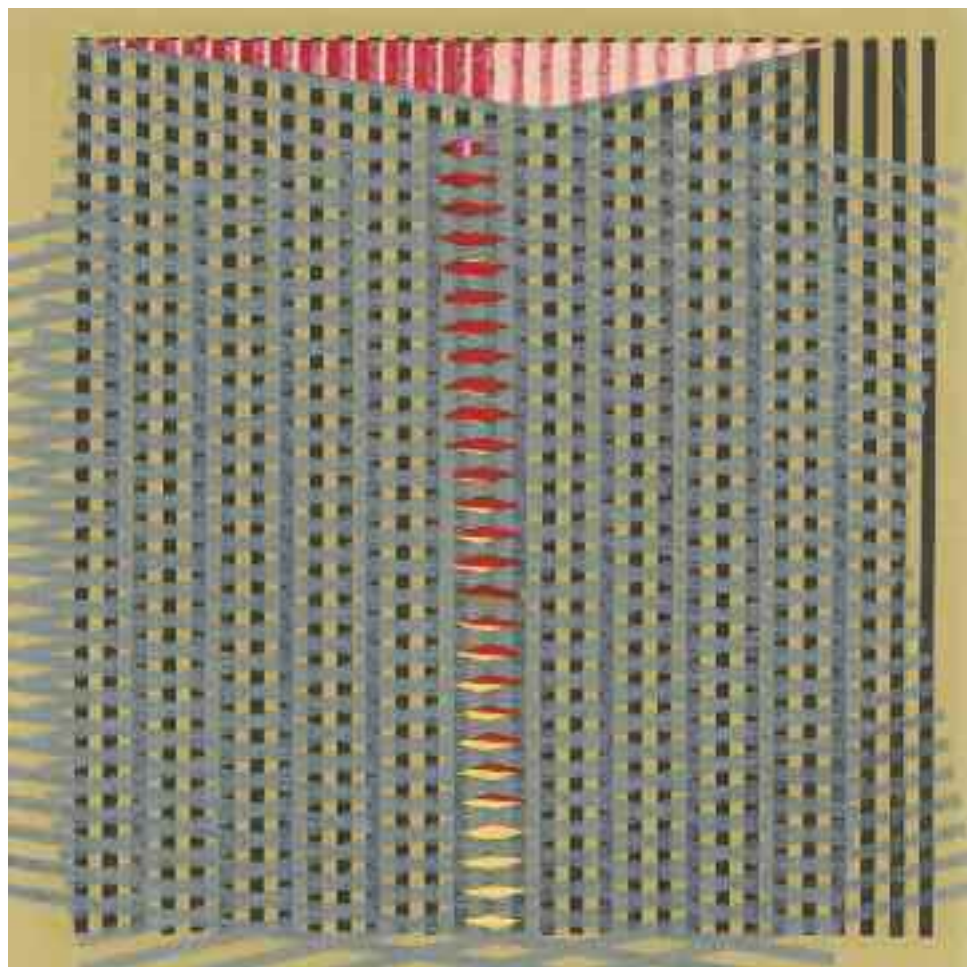
### **Mike Healey at Thompsons Gallery, London, 2010/11**

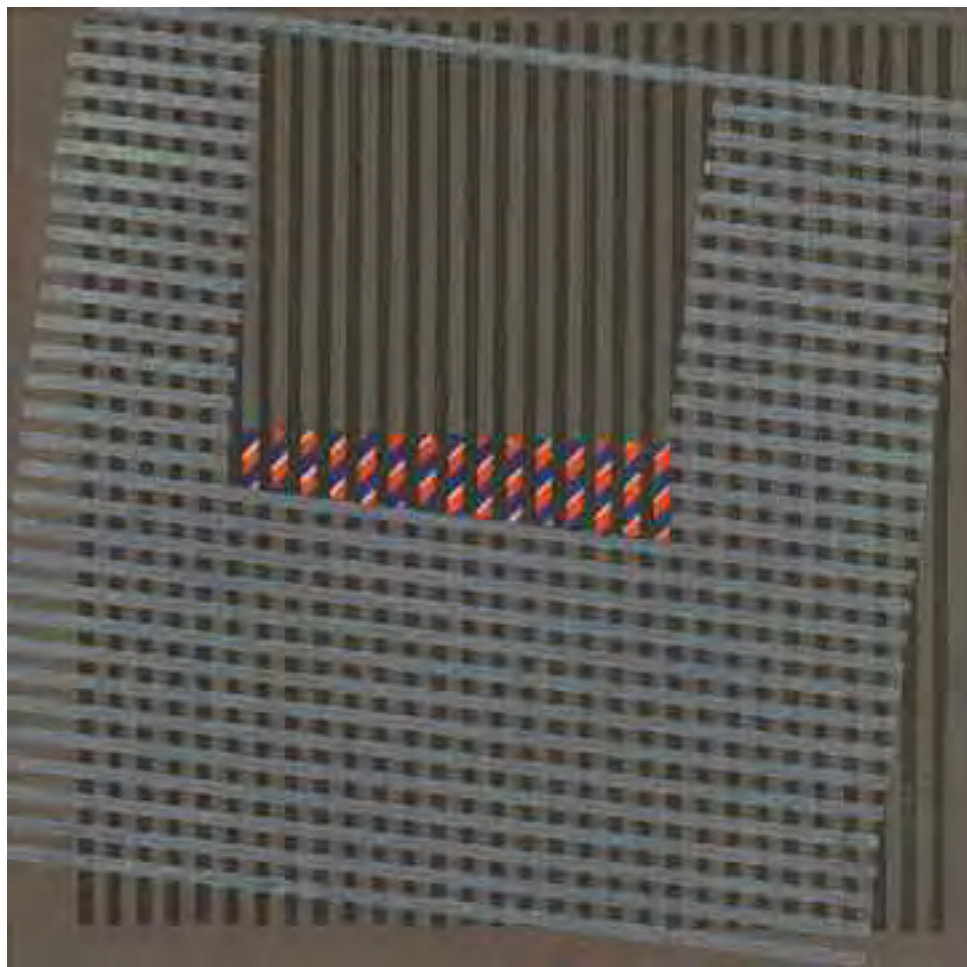
Mike Healey studied under John Cunningham at Glasgow School of Art, winning the Haldane Travelling Scholarship and the Leverhulme Travelling Scholarship. His artworks may be found in several public, corporate and private collections worldwide, including Glasgow School of Art, the European Parliament, the Royal Mail, Woburn Abbey, Argyll and Bute Museum and Libraries, the Scottish

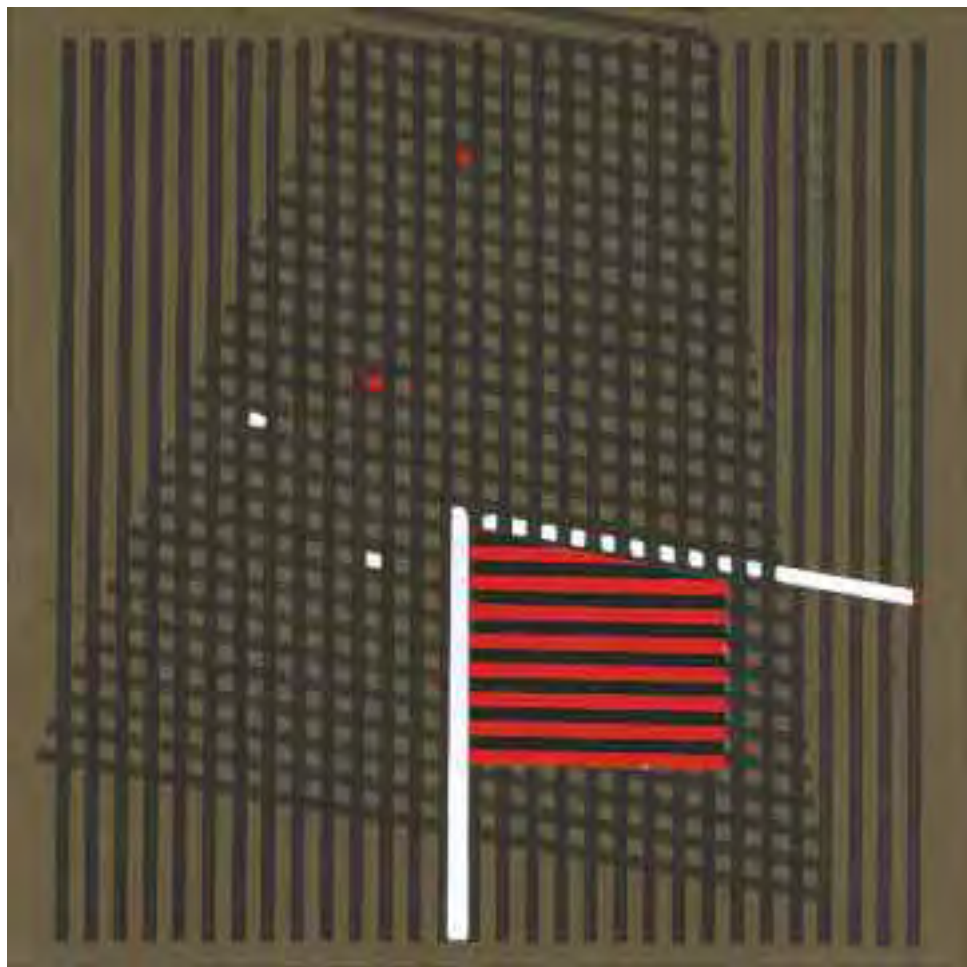
Education Department and The Collection, Bermuda, under the patronship of HRH the Prince of Wales. The Bank of Scotland, Coutts Bank and Royal Bank of Scotland have all purchased several paintings for their permanent collections. Underpinning all Mikes work is a strength of drawing that is a common thread throughout all his output. We are delighted to see that some of his experimental drawings are to be seen in a solo show in Sydney, Australia and Philadelphia, USA as well. Here in London Mike has exhibited with Thompson's Gallery since June 2000 and we have hosted at least six solo exhibitions of his work. The juried selection process for these solo shows is rigorous and highly competitive. Ultimately all Mikes drawing experiments and his extended visual research find their way into his painting. His drawing and painting continue to be well received by private, public and corporate collectors.

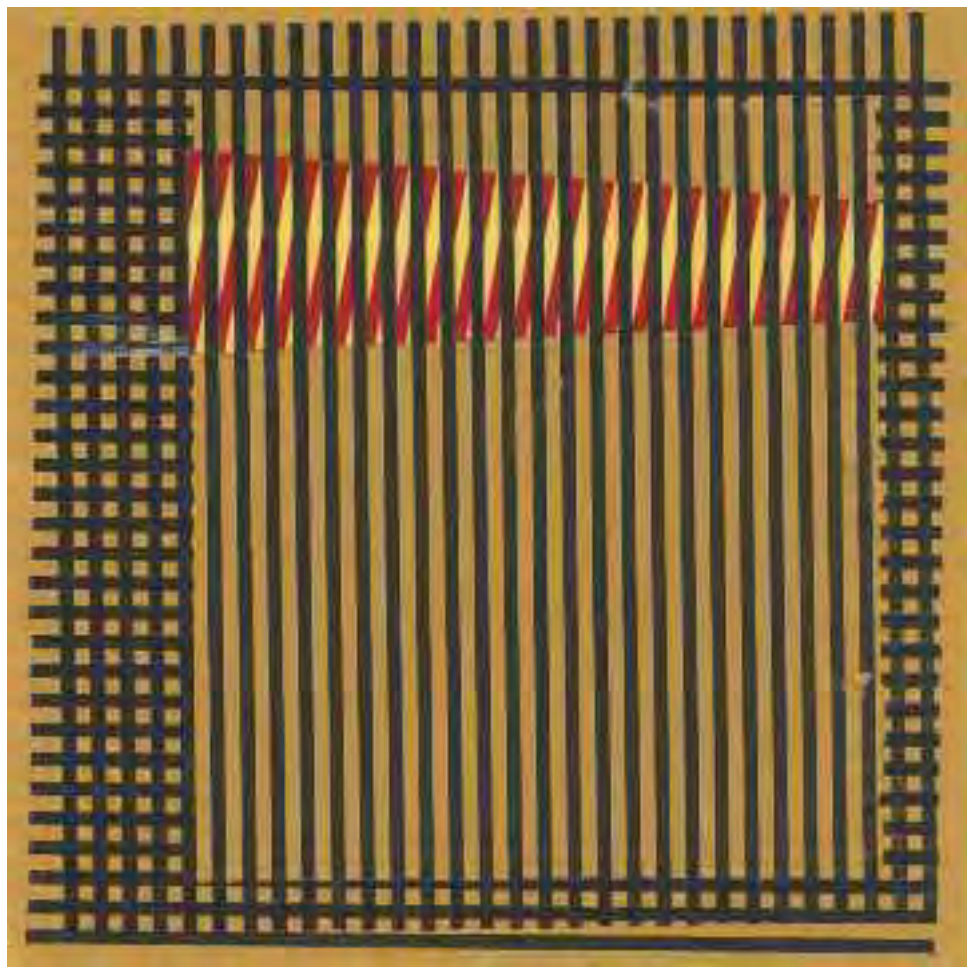
Judy Stafford

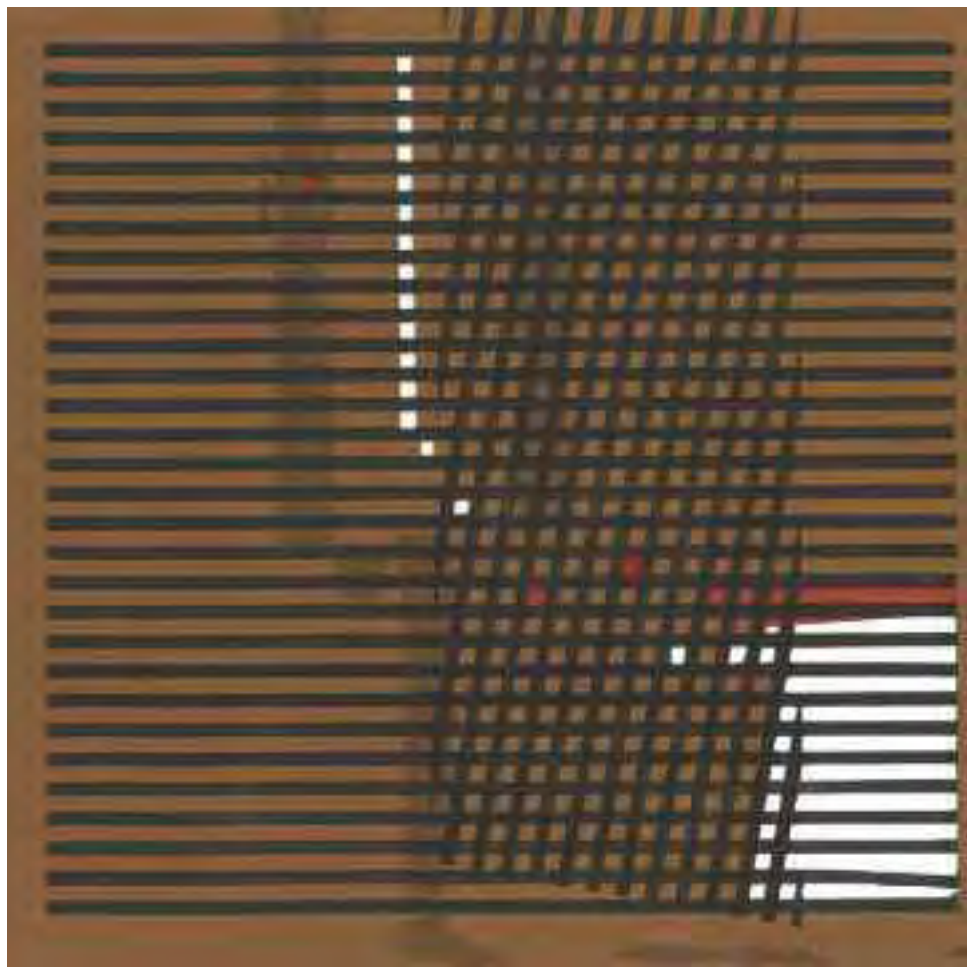
Thompsons Gallery  
15 New Cavendish Street  
Marylebone  
London W1G 9UB  
United Kingdom





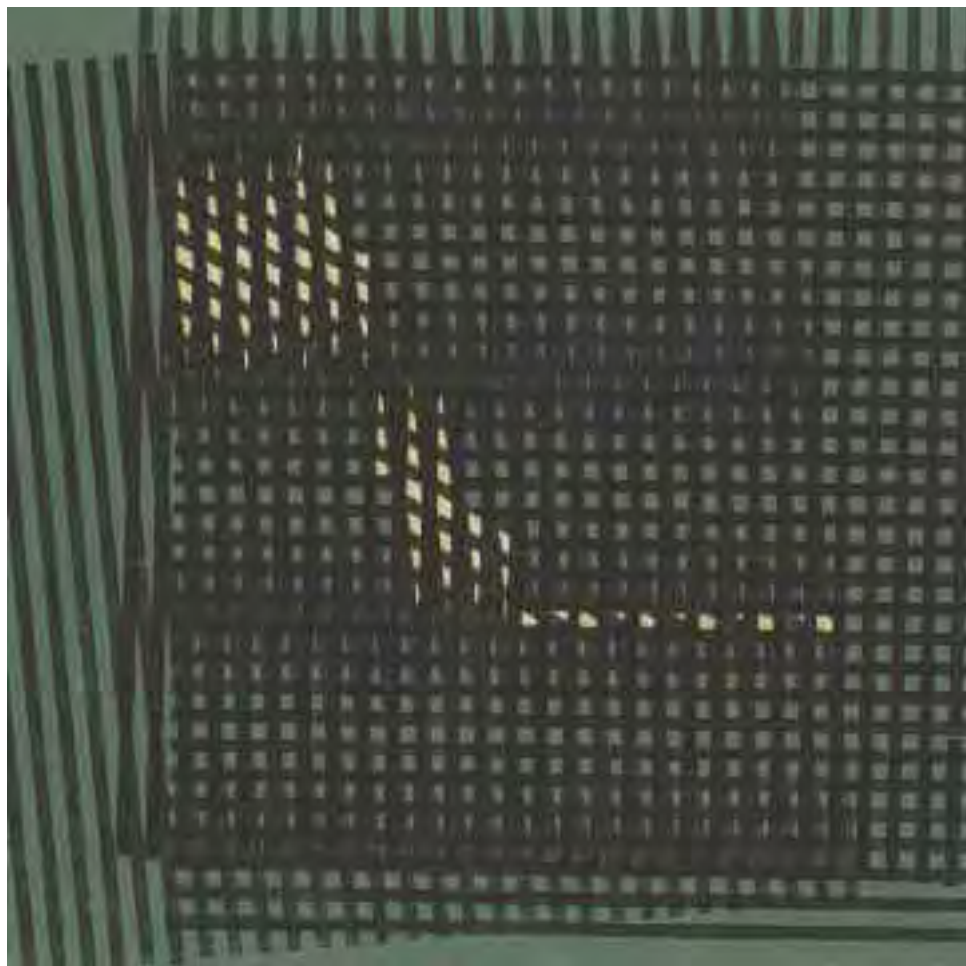


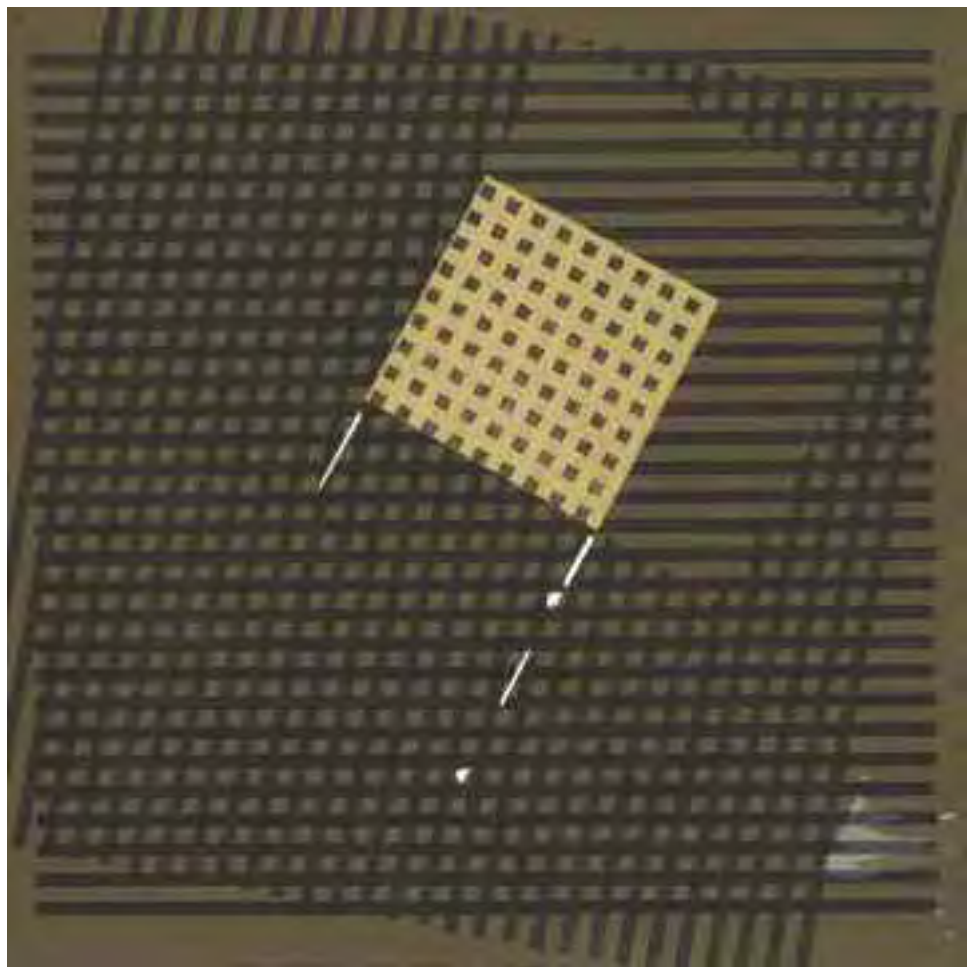




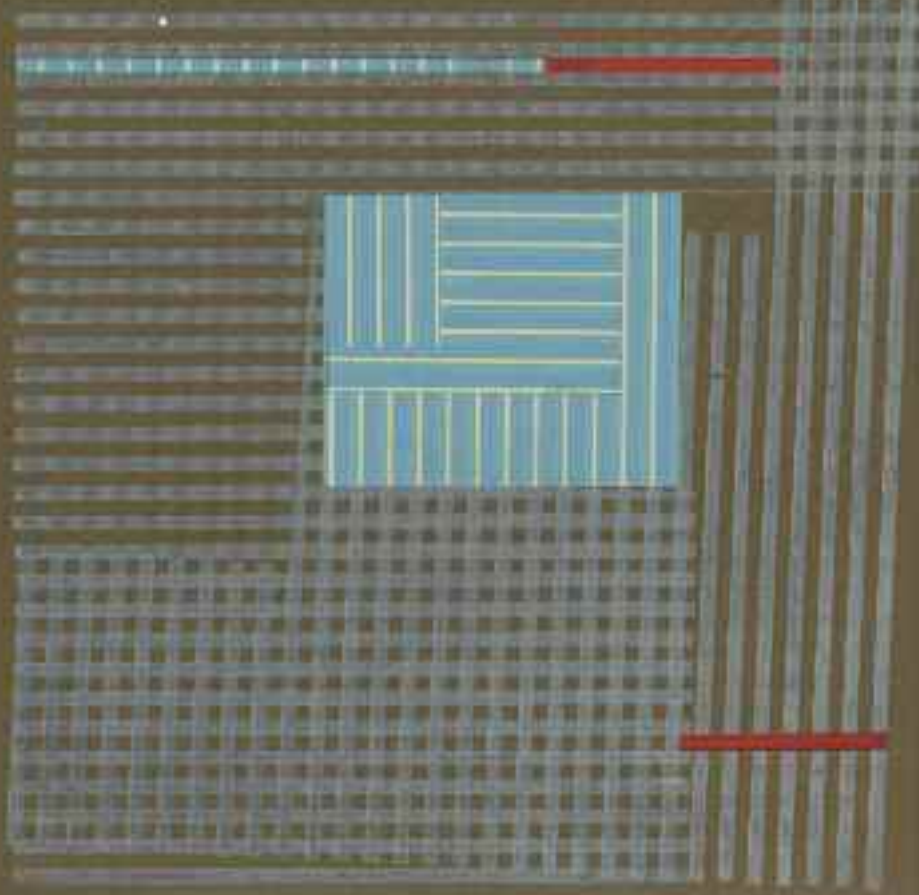








# THE HISTORY OF THE UNITED STATES





Professor Mike Healey

Professor of Art and Design  
Lincoln School of Art and Design  
University of Lincoln  
Brayford Pool  
Lincoln  
United Kingdom



**ISBN-13: 978-1-86050-232-3**